

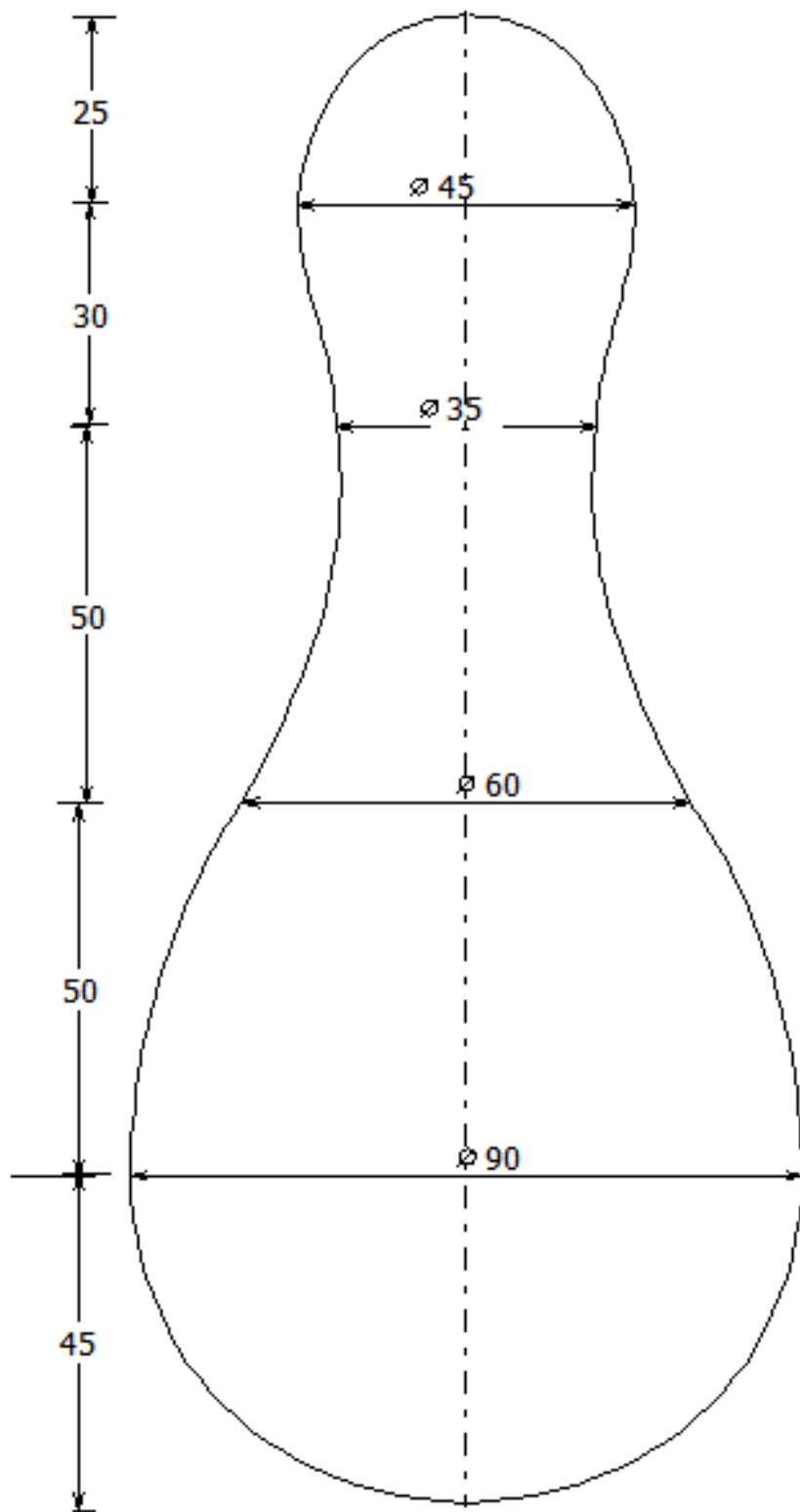
TURNUED AND BEADED CHOOK.

Gorgi Armen's demonstration Sunday 19th June 2016

Dimensions and profiles



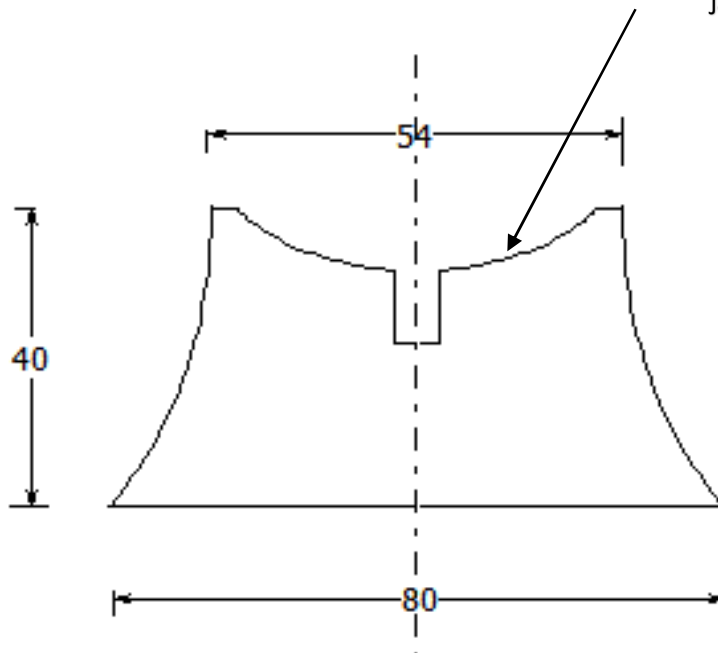
Cut a slot in the head and cut the chook's comb from thin ply or similar and glue in place. Drill and insert a piece of dowel for the eyes



Body

Shape recess to suit body dia.

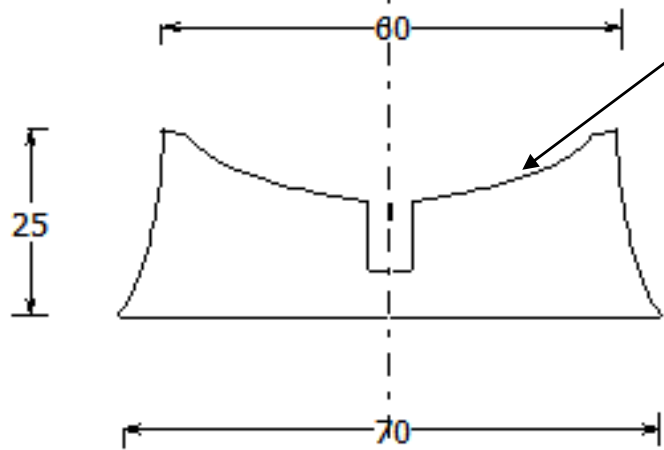
Join to body with suitable dowel



Tail

Shape recess to suit body dia.

Join to body with suitable dowel



Base