

FULL SIZE TEMPLATE

NOTES:

It is essential that all corners be sanded round and all surfaces sanded thoroughly to 400 grade

Wheels are cut using a $\phi 35$ (rear) and a $\phi 30$ (front) hole saw from 12mm thick pine. The hole saw has a 6 centre drill which means the wheel can be press-fitted onto $\phi 6$ dowel.

The two axle holes in the car body are 7mm dia.

"Windows" are drilled from both sides using a 20mm dia forstner bit to 3mm depth.

Finishing:

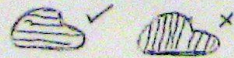
Wheels are stained with red food colouring before assembling

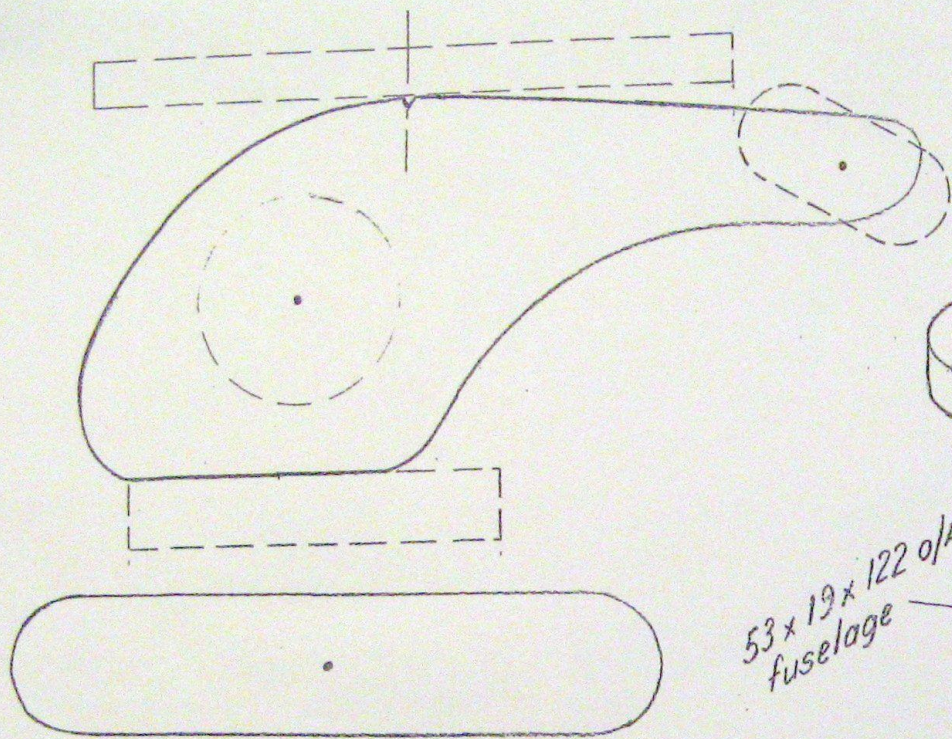
Apply Tung Oil to the car body before fitting the wheels.

Car body is cut from between 19 and 25mm thick pine. Avoid short grain

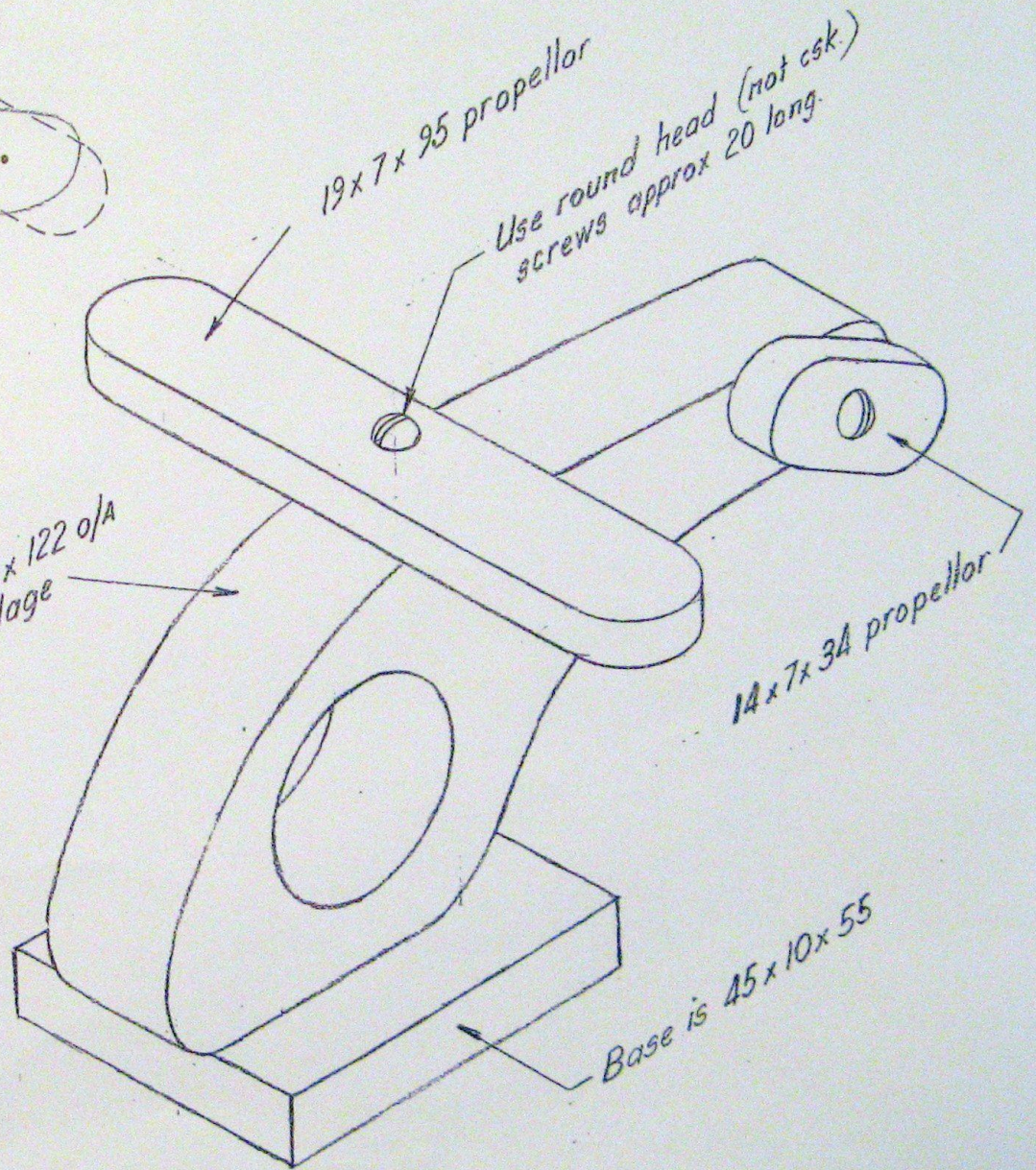
Wheels are cut from 12mm thick pine.

Axles are $\phi 6$ dowel, ends sanded





53 x 19 x 122 o/a
fuselage

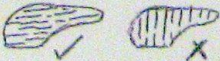


The profiles above are drawn to scale.
They can be cut out and used as templates.

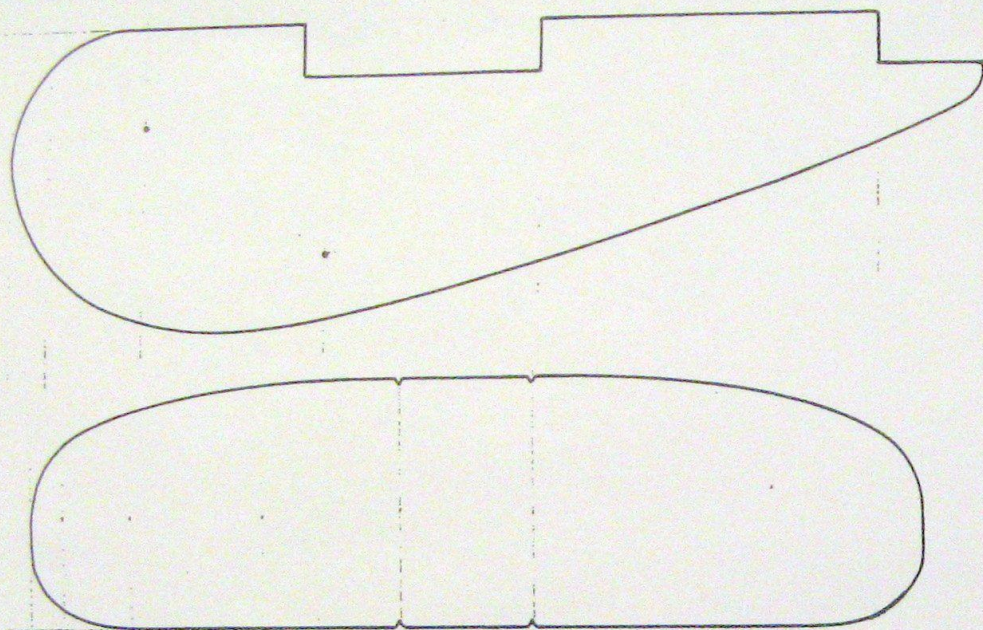
It is essential that all parts be thoroughly sanded and all sharp edges removed.

To enable the "propellers" to spin, pre-drill their holes with a drill size slightly larger than the shank size of the screws used.
The "cabin" is drilled with approx 30mm. dia hole saw.

All fixed parts are glued with waterproof P.V.A.
The finish is Tung Oil.

NB. Avoid "short grain" → 

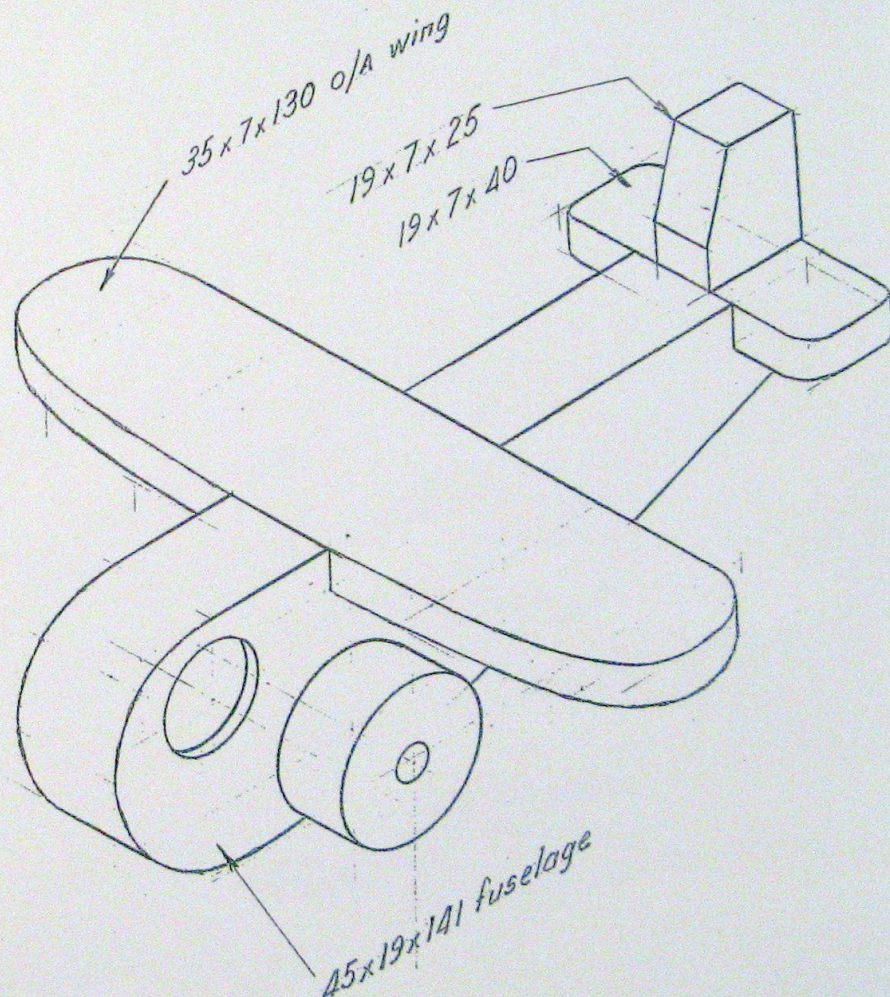
For further information, contact Trevor McAlister
temcalister@optusnet.com.au



FULL SIZE TEMPLATES

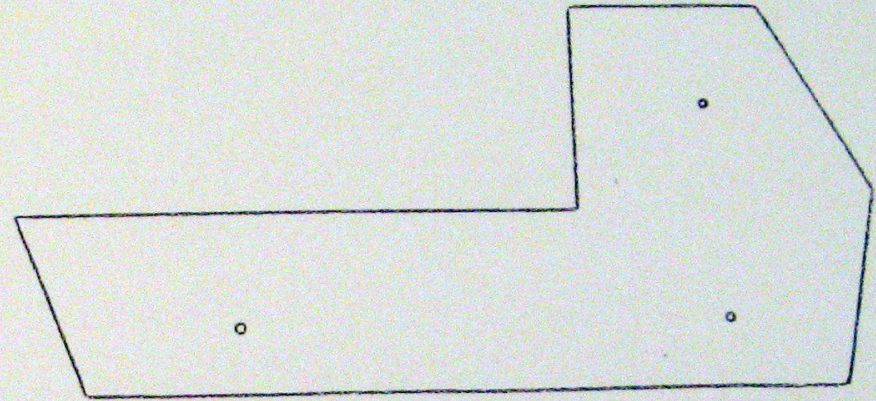
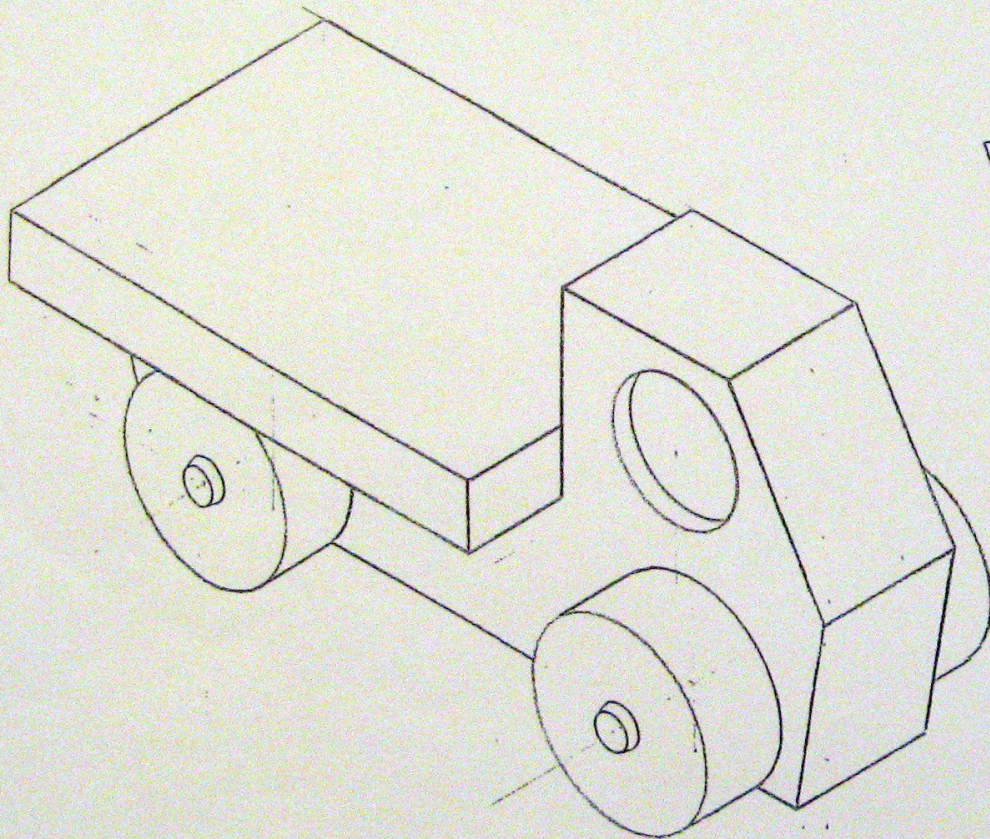
Notes

- The profiles above are drawn to scale. They can be cut out and used as templates.
- Wheels are cut using a $\phi 28$ hole saw. ($\phi 6$ centre drill) from 12mm thick pine.
- Wheels are press fitted onto $\phi 6$ dowel.
- The axle hole is $\phi 7$.
- "Windows" are drilled from both sides using a $\phi 20$ mm "forstner bit" to 3mm depth.
- All parts are glued with waterproof P.V.A.
- Wheels are stained with red food colouring before assembling.
- All other parts are finished with Tung Oil.



NB It is essential that all parts are thoroughly sanded and sharp edges removed

For further information, contact Trevor M^cAlister
Email: trevcalister@optusnet.com.au



FULL SIZE TEMPLATE

NOTES:

It is essential that all corners be sanded round and all surfaces sanded thoroughly to a 400 grade paper.

Wheels are cut using a $\phi 28$ hole saw ($\phi 6$ centre drill) from 12 mm thick pine.

Wheels are press-fitted onto $\phi 6$ dowel. The back is glued using P.V.A waterproof glue.

The two axle holes in the truck body are $\phi 7$ dia

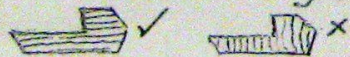
"Windows" are drilled from both sides using a 20 mm dia forstner bit to a 3 mm depth

Finishing:

Wheels are painted with red matt acrylic before assembling.

Tung Oil is applied to the truck body before fitting the wheels.

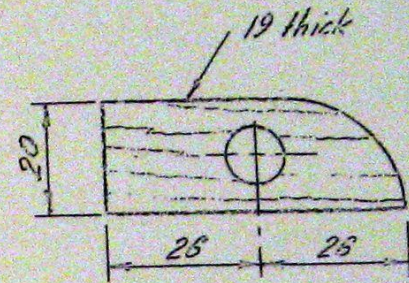
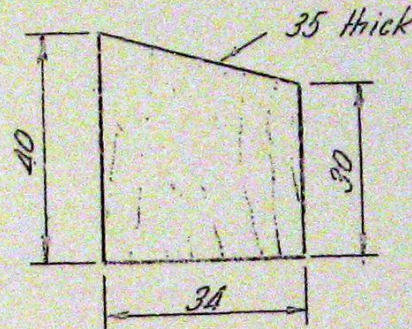
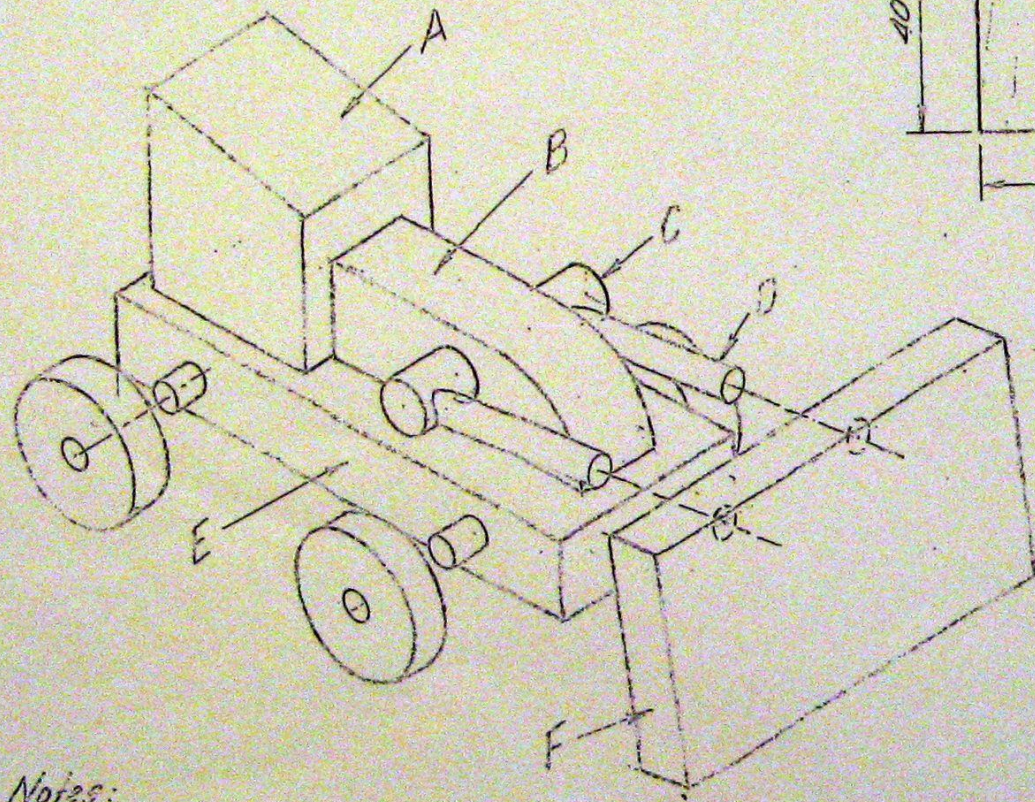
The body of the truck is between 19 and 25 (better) thick pine. Avoid short grain



Wheels are cut from 12 mm thick pine

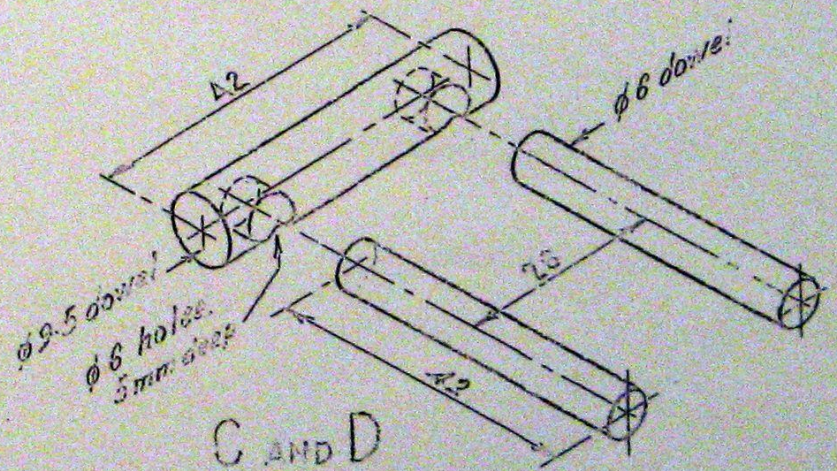
Axles are $\phi 6$ mm dowel. ends sanded

The back is 85 x 52 x 9 customwood or similar



A

B



C AND D

Notes:

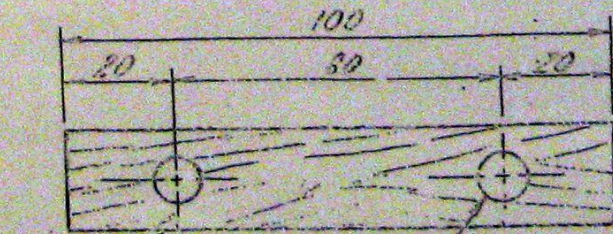
All sharp corners to be sanded before assembly

Wheels are cut with a $\phi 32$ hole saw ($\phi 6$ centre drill) from 12 thick pine

Wheels are stained with red food colouring before assembly

Holes through parts B and E must be 0.5 larger than the dowels

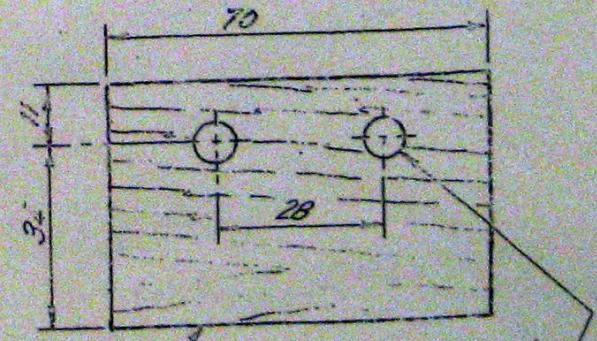
Finish is Tung Oil applied before fitting the wheels



19 thick

E

$\phi 7$ Holes



12 thick

F

$\phi 5 = 5\text{mm deep}$